

专业影像技术设备制造商

Professional image technology equipment manufacturer

提供PCB检修完美方案

Provide an perfect solution for PCB overhaul

定制各种在线分板或离线分板检修方案

Customize various online sub-board or offline sub-board maintenance solutions

定制信息化软件和缺陷数据统计分析E-mapping&H-mapping

Customized information software and statistical analysis of defect data E-mapping&H-mapping

自有软件著作权、自有专利

Own software copyright, own patent

广州锋明智能科技有限公司

Guangzhou Fengming Intelligent Technology Co., Ltd.

地址: 广州市番禺区沙湾镇福龙路83号威乐工业园

ADD: Weile Industrial Park, Fulong Road, Shawan Town, Panyu District, Guangzhou City.

电话/Tel: 020-84737698-8001 传真/Fax: 020-84737698-8015

网址: <http://www.fmtechs.cn> Email: zhouxm2099@163.com

联系人(Contacts): 周先生(Mr. Zhou) M.P: 13600185887

广州锋明智能科技有限公司

Guangzhou Fengming Intelligent Technology Co., Ltd.

公司简介 Company Profile

广州锋明智能科技有限公司是专业从事PCB行业光学影像设备的研发、制造、销售、维修服务的高新技术企业。在“弘扬创新，技术为先！”理念倡导下，我们引用并吸收国外先进光学科研技术，联合国内知名的光学科研单位，经过多年长达数百万次的测试后于2005年成功推出AOI行业内一款自主设计、自主知识产权、可以同时联接Orbotech奥宝、Screen网屏、Camtek康代、Machvision牧德等AOI的多功能检修站—MULTISTAR。MULTISTAR可以完全替代昂贵的国外AOI检修站。

经过多年的产品升级，我们又于2010年重磅推出功能更强大的多功能检修站LINKMASTER。LINKMASTER比MULTISTAR功能更强大、兼容性更强，拥有标配紫光功能、电子统计报表等功能。LINKMASTER可以联接更多机型，如Optima奥蒂玛连线AOI、Testing 坦斯叮连线AOI、Eagle eye鹰眼连线AOI、Image宜美智连线AOI、Machvision牧德连线AOI、TZTEK天准AOI等市场主流AOI。

我们的产品已销售超5000台（超过300家客户），产品销往除中国大陆地区之外，还销往台湾地区、韩国、日本、泰国、越南等地。我们是行业专注于生产AOI检修站的制造企业。得到包括SCC深南电路、依利安达集团、APCB(泰国、昆山)公司、景旺集团、胜宏集团、敬鹏电子、定颖电子(昆山)有限公司、依顿电子等上百家PCB厂家的认可与信赖。

Guangzhou Fengming Intelligent Technology Co.,Ltd. is a Hi-tech corporation specialized in the development, manufacturing, selling and maintenance service of PCB optical imaging equipment. On the initiation of innovation forwarding and technique for first, we introduced and assimilated the advanced optical technologies, associated with the well-known research and development institutions. In 2005, after several years of testing for millions of times, we launched the only self-design, self-property right multiple maintenance facility station, MULTISTAR which can link up with the mainstream AOI of Orbotech, Screen, Camtek, Machvision AOI ect.

In 2010 our company made a big upgrade of products. We produced a better AOI Multi-function Verify Repair Station—LINKMASTER. LINKMASTER's function is more powerful and more compatibility. LINKMASTER can connect more brands of AOI to check PCB board, such as Orbotech AOI, Optima AOI(On line), Testing AOI(On line), Eagle eye AOI(On line), Image AOI(On line), Machvision AOI(Online), TZTEK AOI(On line), etc.

Our products have been sold over 5,000 units (more than 300 customers), and our products are sold not only in mainland China, but also in Taiwan, South Korea, Japan, Thailand, Vietnam and other places. We are a manufacturing enterprise specializing in the production of AOI maintenance stations in the industry. Obtained hundreds of PCB manufacturers including SCC Shennan Circuit, Elec&Etek, APCB (Thailand, Kunshan) Company, Kirwong, Victory Giant, Chin poon, Dynamic (Kunshan), Ellington Electronic, etc. recognition and trust.

客户案例 Customer case

(排名不分先后 In alphabetical order)

 富士康	 深南电路	 依利安达	 山本电子	 竞亿、竞陆	 敬鹏电子	 定颖电子	 瀚宇博德
 京写集团	 中京电子	 志浩电子	 元茂电子	 胜宏科技	 广合科技	 金百洋	 科翔科技
 兴森科技	 崇达电路	 明阳电路	 木林森	 金禄电子	 生益电子	 满坤科技	 惠亚电子
 Apex Circuit	 深联电路	 景旺电子	 依顿电子	 英创力电子	 上达电子	 名幸电子	 红板科技



多品牌AOI检修站的完美方案
可以连接所有市场主流AOI进行检修作业

The perfect alternative solution of multiple brand AOI verify repair station, It can connect all mainstream AOIs in the market for maintenance



多款规格满足您不同的需求

Many specifications to meet your different needs

锋明AOI检修站LINKMASTER技术规格

Specifications of FengMing VRS-LINKMASTER

Model(型号) Item(項目)	LINKMASTER-SH	LINKMASTER-W	LINKMASTER-L1	LINKMASTER-L2	LINKMASTER-L3	LINKMASTER-L4	LINKMASTER-HD	LINKMASTER-IC
Max Panel Size/最大尺寸:Inch	28*28.5	28*30	28*36	28*42	28*48	28*60	28*28.5	28*28.5
Zoom factor/放大倍率	25~110X	25~110X	25~110X	25~110X	25~110X	25~110X	30~200X	40~400X
Min line width/spacing 最小線寬&線距	1.8mil/1.8 mil	1.8mil/1.8 mil	1.8mil/1.8 mil	1.8mil/1.8 mil	1.8mil/1.8 mil	1.8mil/1.8 mil	1mil/1 mil	0.3mil/0.3 mil
Weight/ 重量	350kg	400kg	420kg	450kg	500kg	700kg	350kg	350kg
Physical Dimensions/ 總尺寸	長*寬*高 (L*W*H); 單位Unit: 毫米mm							
	1500*1865*1300	1500*1900*1300	1500*2065*1300	1500*2260*1300	1500*2370*1300	1550*2100*1300	1500*1865*1300	1500*1865*1300
Broad Thickness/ 檢板厚度	0.05-3.85mm (CCD can auto focus / CCD自動對焦)							
Power supply/電源	1.8KW	1.8KW	2.2KW	2.2KW	2.2KW	4.5KW	1.8KW	1.8KW
	AC 1Ø 220V±10%; Reliable earth wire is required.(必須有可靠接地線)							
Broad Type/板料類型	Inners、Outers、Resist、Flex PCB (內層、外層、幹膜板、軟板)							
Throughput/ 檢修速度	Maximum: 1 second , Typical: 0.5 of a second (最大: 1個缺陷/秒; 通常情況: 2個缺陷/秒)							
Confirmation Way/確認方法	Real-time comparing CAM image and video image (視頻圖像與CAM圖像即時對比)							
AOI Systems Supported 聯接的AOI品牌	Orbotech、Camtek、Image、Eagle-eye、Machvision、Optima、Screen、Testing、Jiejun、TZTEK ect.							
	奧寶、康代、宜美智、鷹眼、牧德、奧蒂瑪、網屏、坦斯町、捷駿、天准等AOI&AVI							
Auto focus, Automatic alignment CCD自動對焦、自動對位功能	Yes (有)							
Statistical table/電子統計報表	Optional (選配項)							
Vacuum function/吸氣功能	Yes; (有, 分級吸氣)							
Lights /光源	7sets LED (3sets Higher lights高側燈+2sets Lower lights低側燈+1set Ring light 環形燈+1set UV lights UV燈)							
Temperature&humidity 溫度、濕度	TEMP (溫度) : 24±2°C; Humidity (濕度) : 50%-60%							
Compressed air/壓縮空氣	Pressure (壓力) : 6~8kgf/cm ² ; Flux (流量) : 1CFM (28 升/分鐘)							
Remarks: Optional other size table(備註: 檢修機可以定制各種尺寸檯面、可以定制連線檢修和和離線分板檢修方案。)								

LINKMASTER 的特点

Specialties of LINKMASTER

超强兼容性 Strong compatibility

LINKMASTER可以与目前市场上的各种主流的品牌AOI进行通讯,可以完全替代Orbotech奥宝/Optima奥蒂玛/Testing 坦斯汀/Eagle eye鹰眼/Image宝美智/Machvision牧德/Screen网屏/Camtek康代/IEJUN捷康/天津 TZTEK AOI的检修站(VRS),生产管理者可以精确的、高效益的安排AOI的生产,大大提高AOI设备的生产效率,同时大大降低了投资成本。

LINKMASTER can link up with the most famous brand AOI, and can completely replace the VRS of Orbotech AOI, Camtek AOI, Optima AOI, Testing AOI, Eagle eye, Image, Machvision AOI, Screen AOI, TZTEK AOI etc.. The production manager can arrange the manufacturing of AOI precisely and efficiently.

实用的应用设计 Practical application design

LINKMASTER不仅保留了MULTISTAR原双面检查、定位缺点确认、CAM图像实时对比等功能,还改进了的对位方式,自动对位方式使这些以前要进行复杂设定的功能变得十分简单。另外LINKMASTER还增加了自动对焦功能,紫光技术的应用(凸显基材,不变铜皮颜色)、自动激光点显示功能、电子报表统计功能,使得LINKMASTER比其他的VRS更实用,功能更全,最大限度地地人为漏检。具有AOI使用经验的操作人员在经过一个小时的培训后就可以独立完成操作。

LINKMASTER reserved double check, location disadvantage confirmation, and image real-time comparison functions of MULTISTAR, and improved the way of counterpoint, automatic counterpoint mode make it easier which need complex settings before. In addition, LINKMASTER added the auto-focusing, violet ray technology (highlight the base material without changing the copper color), auto laser spot display, electronic statements statistics functions which make LINKMASTER more practical and complete, and preclude artificial leak detection in high limit.

定点缺陷的检修功能(有别于其他所有AOI检修站)

Locate and repair defect function (Different from all other AOI verify repair station)

LINKMASTER专门针对于PCB检测中的定位缺陷而设计的功能。特点:无需cam资料,无需AOI扫描。根据电路板布局,只要设定两个定位点,进行简单编辑后,确定定位缺陷点(可以是多个)就可以自动生成缺陷文件,即可进入批量检修。

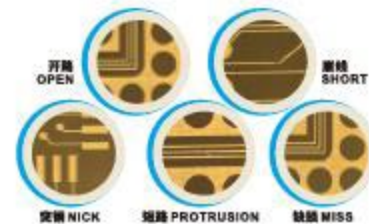
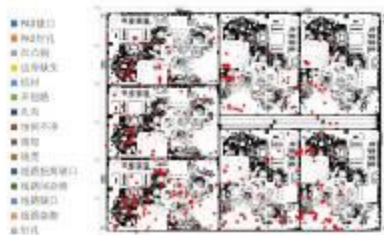
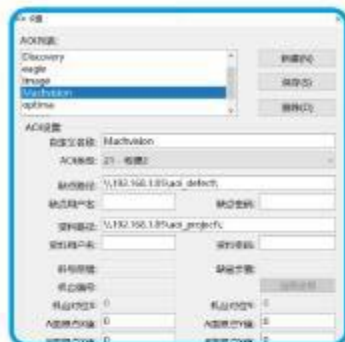
The function designed by LINKMASTER specifically for the location in the detection of defects. Features, without cam files and AOI scan, according to the circuit board layout, it only need to set two anchor point and simple edit, and determine the location of the defect point (can be more than one), it can automatically generate faults file and enter the batch repair mode.

强大的工业智能信息化工厂数据配合能力

Powerful industrial intelligence information factory data coordination ability

我们拥有强大的研发队伍,具有配合客户智能数字化工厂需要的软件开发能力。我们可以配合客户进行定制化的智能工厂信息化软件开发,可配合客户进行MES要求的软件定制化开发,可提供包括各类数据通讯接口、缺陷数据统计报表、H-mapping缺陷分类分析、E-mapping统计图表。

We have a strong R&D team and have the software development capabilities to meet the needs of customers' smart digital factories. We can cooperate with customers to develop customized intelligent factory informatization software, and can cooperate with customers to develop customized software required by MES. We can provide various data communication interfaces, defect data statistical reports, H-mapping defect classification analysis, E-Mapping statistics chart.



LINKMASTER 的联机现场实例

Online site instance of LINKMASTER



联机现场实例一



联机现场实例二



联机现场实例三



联机现场实例四



联机现场实例五



联机现场实例六